



# North Berwick Harbour Regeneration Plan

- North Berwick Harbour is an historic and essential part of the local community, playing a significant role in the town's economy and tourism.
- It creates a focal point for tourists, business, volunteering, leisure and environmental projects through the wide variety of organisations based around the Harbour.
- Maintaining and enhancing the harbour's infrastructure is essential to maintain to its safe operation and grow North Berwick's success.
- Our application to the NB Trust details a regeneration plan aimed at repairing and improving the harbour's walls and facilities.
- These projects are essential to secure the long-term viability and attractiveness of North Berwick Harbour.

**Goal is to create a financially sustainable harbour owned by the North Berwick Community**



# Our Next Repair Priorities

# Our Next Priorities

**Lower Quay Slipway repairs  
(incl. Accessible access for  
Beach wheelchairs)**

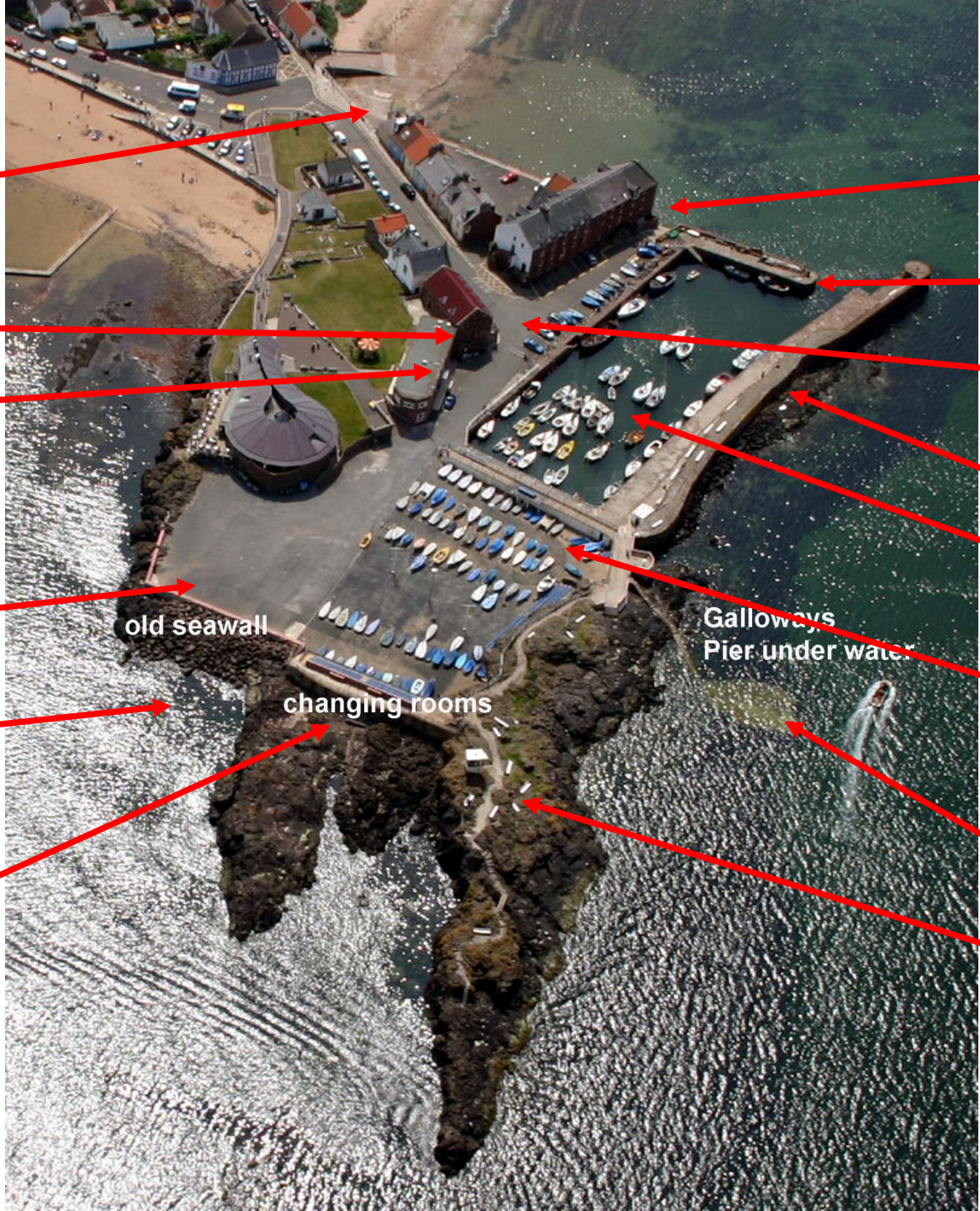
Toilets refurbishment  
(started)

Ground floor  
Building repairs

New Washdown  
facilities for boats  
moved away from  
granary building

New Rock Armour  
to reinstate  
protection

**North East Seawall  
Strengthening, Community  
Building, & enterprise/storage  
units (heritage trail)**



**Granary Wall Repairs**  
(started)

Crane Wall Repairs

Road Surface Repairs

Remaining Sea Wall/Wedge  
strengthening

**Mooring Chains replacement**  
(started)

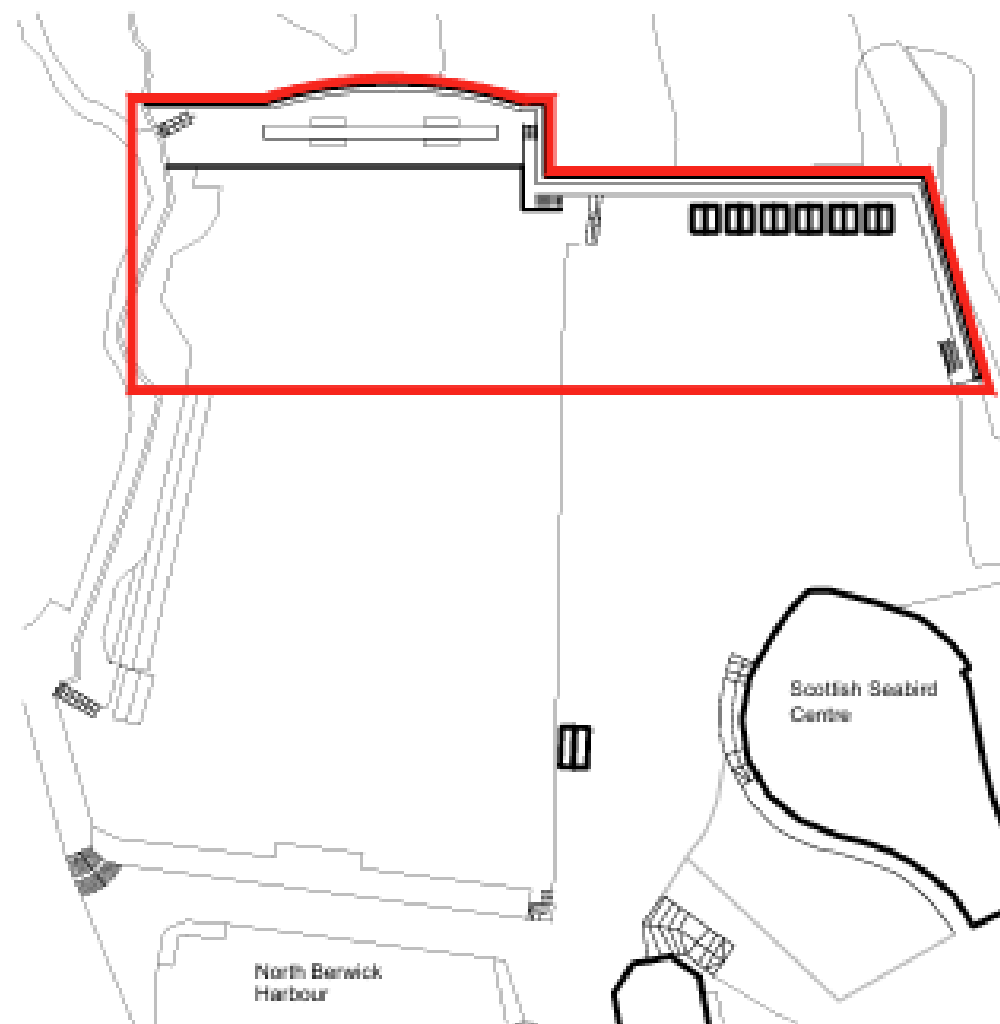
Esplanade Drainage &  
services improvements

Galloways Pier undermining  
repairs

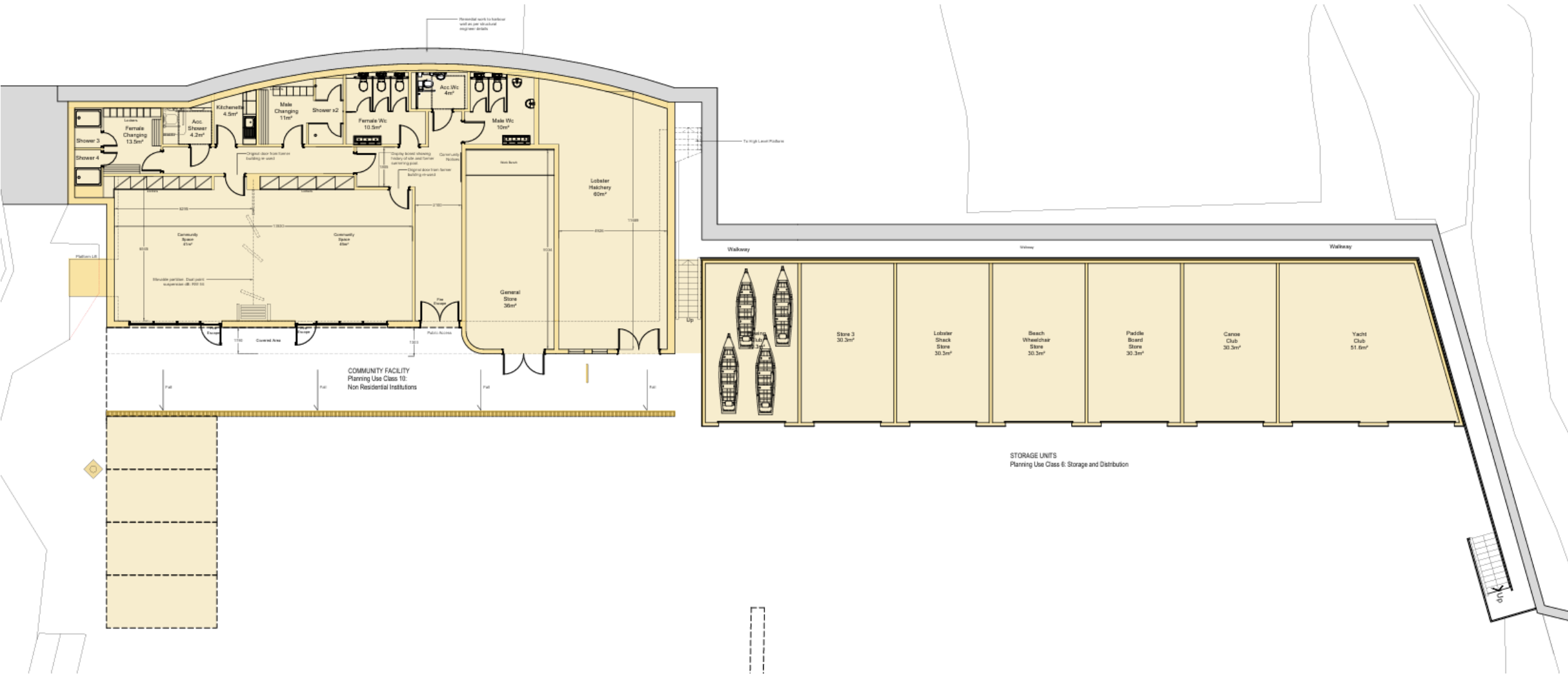
Platcock Rocks bench  
Repairs



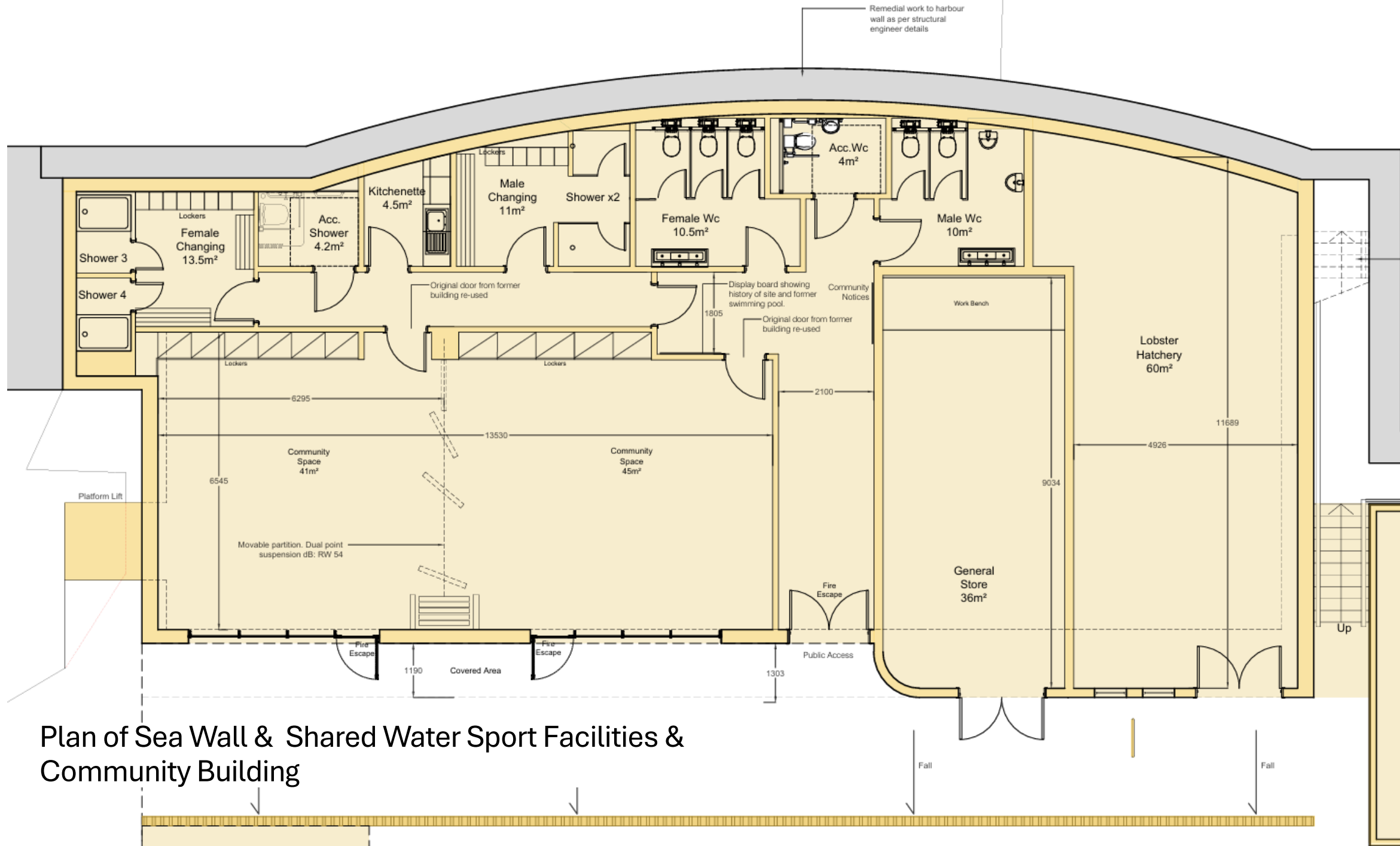
Proposed Repair & Reinforcement of  
North-East Seawall,  
Community building & Enterprise/Water Sport  
Storage Units



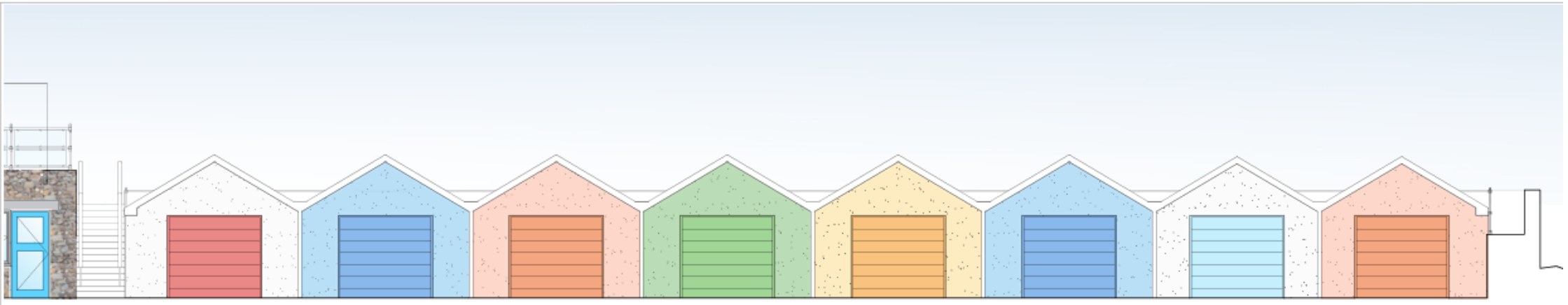
Location plan



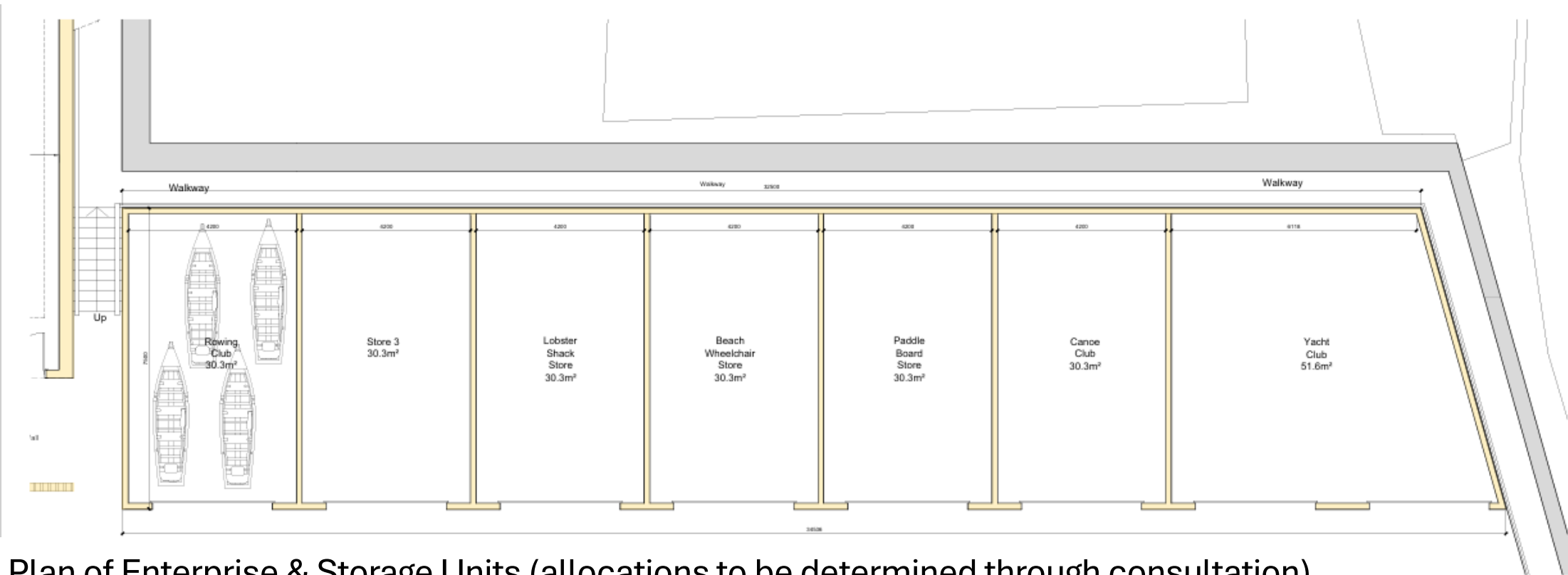
Plan of Community Building & Enterprise & Storage Units



Plan of Sea Wall & Shared Water Sport Facilities & Community Building



Elevations of Enterprise & Storage Units



Plan of Enterprise & Storage Units (allocations to be determined through consultation)





Indicative Images of Community Building

# Summary

- Planning application approved
- Site of Scientific Special Interest (SSSI) and Forth Protection Area (FPA)
  - Constraint : not allowed to build or use temporary works on Seaward side of wall
  - Solution : Retain existing wall & Strengthen behind it
  - Working Restrictions : Summer months only to protect winter nesting birds
- Not just repair seawall & remove derelict changing rooms but enhance shared water sport & community facilities : ' Repair & Enhance is Our New Approach'
- Summer of Fundraising
- Ideal Start date Spring 2026

# Previous repairs completed over last 10 years



- ‘Viridor’ Esplanade Wall £324k
- SE Seawall inner harbour rock anchors £500k
- Galloways Pier £240k
- ‘Town’ Slipway used by RNLI £80k
- Sea Wall breach repair
  
- NB in Bloom Planters, Barometer, Safety Equipment, Beach Huts, Cubicle storage units